

•  
•  
•  
•  
•  
•  
•  
•  
•  
•  
•

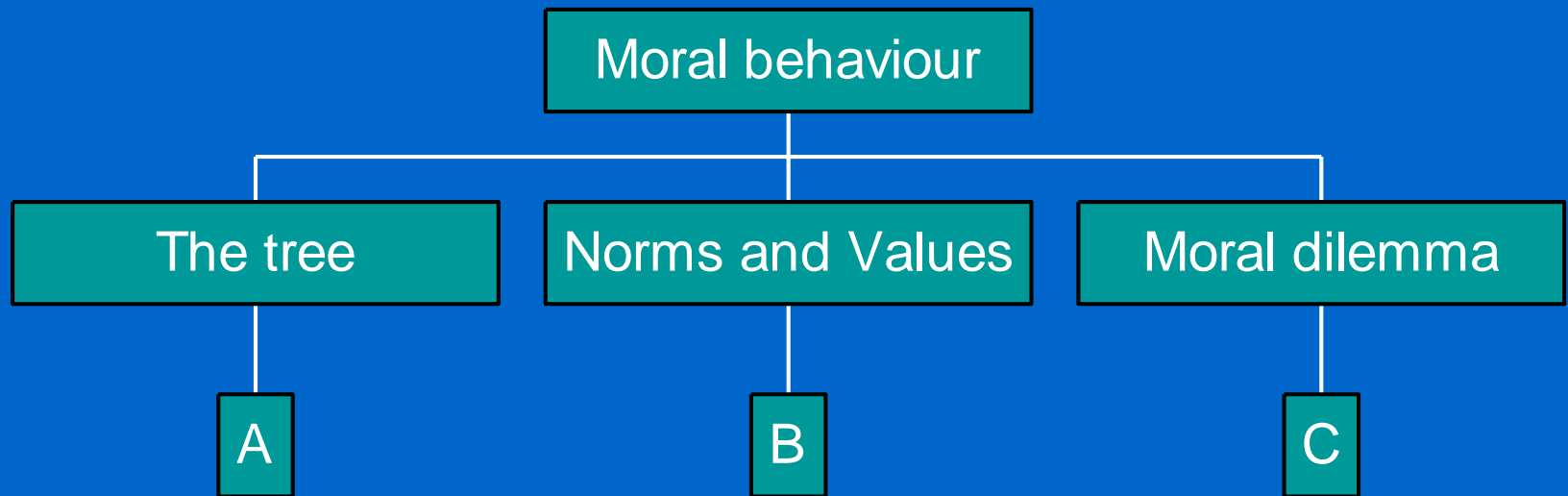
# Moral Leadership

## Dilemma's of a schoolleader



Frans Schmitz  
Henk Janssen

# Design of the session



# Our moral tree

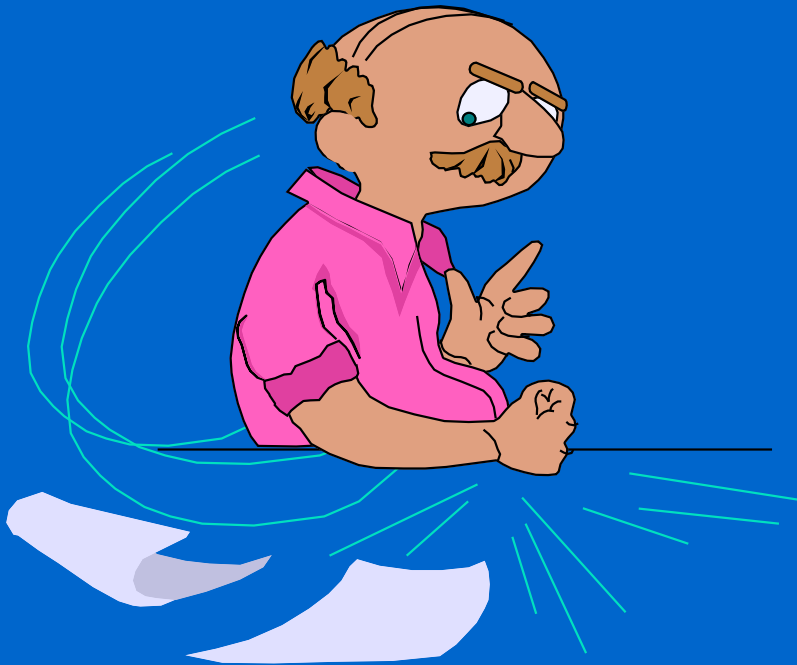
- Morals, Moral behaviour (the branches and the leaves)
- Personal Values ( the trunk)
- Ethics (the roots)



# Norms

- all information must be accessible for anyone
- all topics are discussable
- you are allowed to do what you do best
- you are allowed to take risks
- you are allowed to deviate from the group norms
- you must fulfill promises
- you must set the right example
- you must be open for changes
- you must provide feedback about unwanted behaviour
- you must treat everyone equally
- you must speak respectfully about others
- you must stick to the rules

# Your most important norms



- Select your two most important norms, listed before.

- 
- 
- 

# Values

Attention  
Reliability

Commitment  
Brotherhood

Equality  
Integrity

Justice  
Respect

Helpfulness  
Discipline

Authenticity  
Appreciation

Loyalty  
Independence

Tolerance  
Responsibility

Clarity  
Honesty

Flexibility  
Obedience

Originality  
Openness

Confidence  
Self reliance

# Your Values

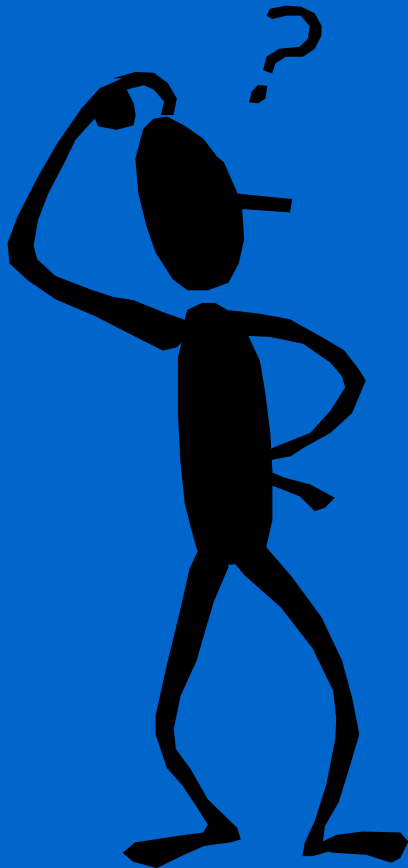


- On which value(s), listed before, are these norms based ?





# Your moral behaviour



- What would you have done ?
- On which values is your behaviour based?